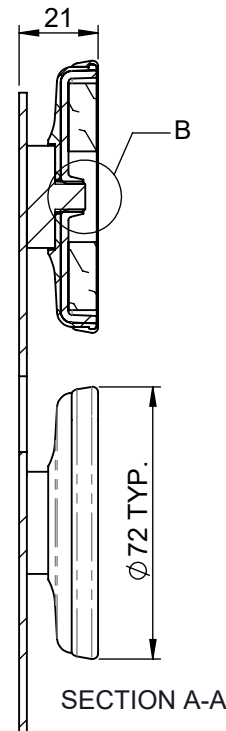
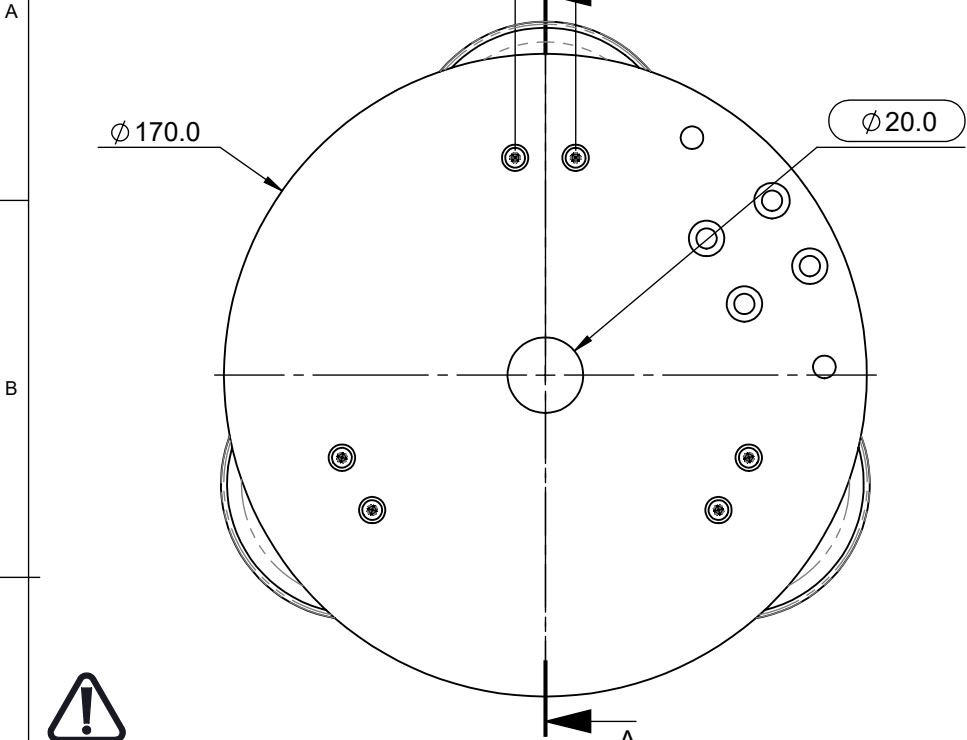
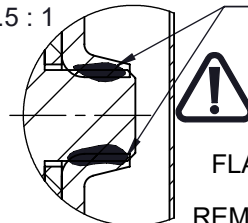


TOLERANCES UNLESS OTHERWISE STATED

0 DEC. PLACE	±0.5	2 DEC. PLACES	±0.1
1 DEC. PLACE	±0.2	ANGULAR	±1°

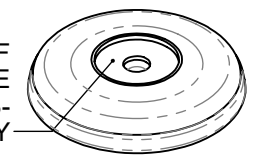


DETAIL B  
SCALE 1.5 : 1

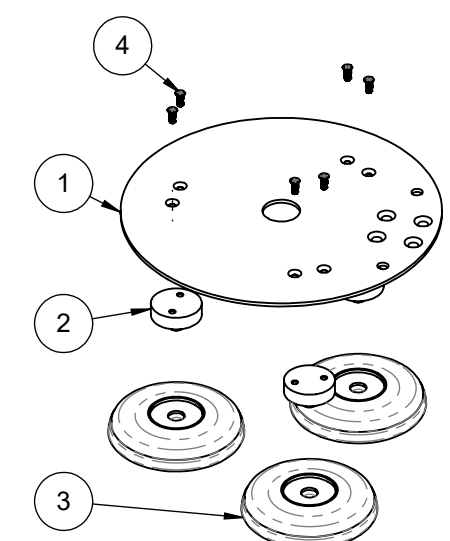
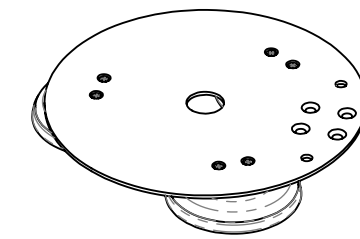


ON ASSEMBLY THREADLOCK ALL SAB-009 MAG. BASE THREADS TO ALL SP5-0555 THREADS. **USE ONLY LOCTITE 270 THREADLOCK. ALTERNATIVES ARE NOT PERMITTED.**

FLAT RUBBER WASHER (IF PRESENT), SHOULD BE REMOVED FROM ALL 3 SAB-009 BEFORE ASSEMBLY



ISO VIEW  
SCALE 1:4



**IMPORTANT NOTE:**  
ALL COMPONENTS MUST BE FREE FROM DAMAGE, SUPPLIED CLEAN, AND FREE FROM OIL AND GREASE. COATED SURFACES MUST BE FREE FROM DAMAGE AND COATING IMPERFECTIONS. ASSEMBLIES TO BE PACKED INDIVIDUALLY IN BOXES - REFER TO BOM.



- NOTES:
- REFER TO INDIVIDUAL PART DRAWINGS FOR REQUIRED FINISHES AND DETAIL DIMENSIONS.
  - SAMPLES MUST BE APPROVED BY PANORAMA ANTENNAS Q.C. BEFORE COMMENCING PRODUCTION.
  - ALL MATERIALS SUPPLIED MUST BE RoHS2 (DIRECTIVE 2011/65/EU) COMPLIANT AND MUST NOT CONTAIN ANY SUBSTANCES OF VERY HIGH CONCERN (SVHCs) LISTED UNDER REACH OR POLY-AROMATIC HYDROCARBONS (PAHs), OR PERSISTENT ORGANIC POLLUTANTS (POPs) CONTROLLED BY THE STOCKHOLM CONVENTION.

ITEM NO.	PART NUMBER	DESCRIPTION	QTY.
1	SP5-0561	LGMM PRESSED ST STL MNTING PLATE	1
2	SP5-0555	GPSDM SPACER	3
3	SAB-009	67mm DIA.MAGNET;COVER & SHROUD S.A	3
4	SF1-0005	M3 x 8 LONG, POZI DRIVE STAINLESS STEEL SCREW	6

01019	1	PART SP5-0561 UPDATED TO INCLUDE SP5-0516 FEATURES	14/06/2017	PE	PRODUCT/ASSEMBLY SUB-ASSEMBLIES	DESCRIPTION	LGMM MAG ADAPTOR								
01019	2	ANL-71 ADDED WHERE INDICATED	09/08/2017	PE											
01019	3	THREADLOCK UPDATED	11/09/2017	PE	MATERIAL	N/A									
01019	4	NOTE ADDED -REMOVE SAB-009 INSERT WASHER	26/10/2017	PE	FINISH	N/A	APPROVED	JJ	D.O.CHECK	AR	SCALE	1:2	DIMENSIONS	IN mm	
01019	5	PACKING UPDATE	04/12/2017	PE											
PCN	REV.	DESCRIPTION	DATE	DRN.	WEIGHT	654.15g	SHEET 1 OF 1								